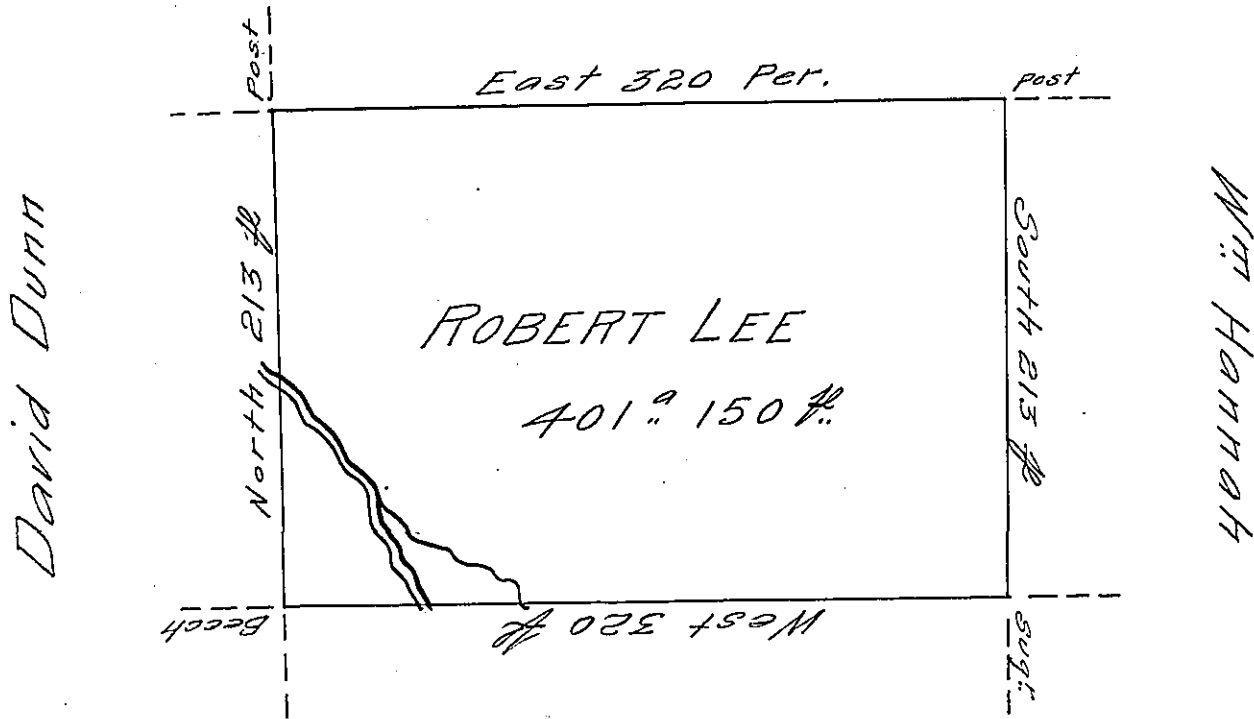


District Line No. 1



Edw<sup>d</sup> Long

Situate on the West Side of French Creek  
 in Allegheny County County Containing 401  
 Acres and 150 Perches and allowance of  
 Six <sup>1</sup>/<sub>100</sub> Cent for Roads &c. Surveyed the 12<sup>th</sup>  
 day of June 1795, In pursuance of his Im-  
 provement Dated the 23<sup>d</sup> day of March 1795

W<sup>m</sup> Power D<sup>r</sup>. Sr.

To Dan<sup>l</sup>. Brodhead Esq<sup>r</sup>.  
 Surveyor General

IN TESTIMONY that the above is a copy of the original remaining on file in  
 the Department of Internal Affairs of Pennsylvania, made  
 conformably to an Act of Assembly approved the 16th day of  
 February, 1833, I have hereunto set my Hand and caused  
 the Seal of said Department to be affixed at Harrisburg,  
 this twenty-seventh day of September 1906

Isaac D. Brown  
 Secretary of Internal Affairs